



CELEBRATING ARCHITECTURE
page 9



20/20 completes \$35M expansion project

page 3

PRSR STD
US POSTAGE
PAID
Toledo, OH
43601-9998
Permit # 348

CHANGE SERVICE REQUESTED

TIME SENSITIVE MAIL
MANUFACTURING & CONSTRUCTION NEWS
PO BOX 1206
MAUMEE OH 43537

Crown constructing new Maumee facility

New building to replace existing branch nearby on Technology Drive



Construction on Crown Lift Trucks' new facility in Maumee

Crown Lift Trucks, a forklift manufacturer headquartered in New Bremen, Ohio, is constructing a new branch facility on North Jerome Road in Maumee to replace its existing facility currently located nearby on Technology Drive.

According to David Welber, branch manager for Crown Lift Trucks in Maumee, Crown's business is expanding and the new facility will enable Crown to offer an expanded set of products and services to customers in the region, including increased levels of service technician training.

Welber noted that the new facility is a typical Crown (...continued on page 2)

FFCU invests \$5M in new Bellevue branch

Firelands Federal Credit Union (Firelands FCU), chartered in 1957 and presently serving over 34,000 members, is investing approximately \$5 million to construct a new two-story, 20,000 square foot branch in Bellevue at 300 North Street – located across the street from its current branch.

Nicole Jones, vice president of marketing, Firelands FCU, said, "Quite simply, we are out of space in our existing building. In addition, we have employees and departments in multiple buildings within our Bellevue campus currently. Our current campus has a drive-through and a main office, as well as a mortgage center. So part of it (...continued on page 8)



Firelands Federal Credit Union's new branch in Bellevue

Uckele purchases two new MI facilities



Uckele Health & Nutrition's headquarters in Blissfield, Michigan

Uckele Health & Nutrition – a Blissfield, Michigan-based company – recently closed on the purchase of two new facilities in Adrian, Michigan that will more than double the company's capacity.

Located at 790 and 800 Liberty Street in Adrian, the facilities are two of five buildings previously owned by supply chain management firm, Venchurs Inc. The acquisition provides an additional 150,000 square feet to Uckele's current operations, including additional office spaces, manufacturing areas, and a shipping / receiving area.

"Uckele is making a significant investment in the Adrian facility. We are very excited to get it upfitted to be ready to make food-type products and are making (...continued on page 20)



Crown

...Continued from page 1

branch facility that will provide office and warehouse space, a fully-stocked parts department, and a service training facility featuring Crown's Demonstrated Performance® (DP) Training programs for forklift service technicians.

"The facility offers customers a complete selection of material handling technologies, products, and services. This includes forklifts, warehouse design solutions, Integrity Parts and Service System™, automated warehouse solutions, and Crown's wireless InfoLink® fleet and operator management system," said Welber. "The location also offers comprehensive battery charger service, providing a one-stop shop to help ensure customers have the power they need for increased forklift uptime and a low cost of ownership."

According to the company, since its entry into the material handling equipment industry in 1960, Crown has earned a reputation as an innovator in forklift and material handling equipment. Crown designs and manufactures up to 85% of its lift truck components, including key parts like motors, drive units, and electronic modules.

From its smallest hand pallet truck to its highest lifting turret truck, according to Crown, it designs, manufactures, distributes, services, and supports material handling products that provide its customers with value. Its broad global dealer network provides a range of quality material handling equipment,

storage solutions, and support services.

In Maumee, Crown offers forklifts and rentals; service and support; and total solutions.

Crown's forklifts and rentals include a nationwide fleet of both used and rental trucks and factory-direct access that provides customers with a broad selection of forklifts, pallet jacks, and specialty lift trucks, delivered



Crown Lift Trucks is currently located on Technology Drive in Maumee

on time and on spec, according to the company. Flexible financing, rental, and leasing options are available.

The company's service and support includes a dealer network that assures responsive service and local parts availability for entire fleets, with comprehensive programs that ensure lowest cost of ownership, according to the company.

Its total solutions includes a trained staff that provides a big-picture view of how equipment works with its customers' people and environment. The Crown dealer offers end-to-end solutions to improve productivity at a facility, including fleet management solutions; warehouse product solutions; warehouse consulting; batteries and chargers; and dock and door, noted the company.

that promote sustainability," said Welber. "Crown's comprehensive and customer-centric approach is focused on providing complete solutions that help customers enhance productivity, improve safety and reduce operation and labor costs. These solutions extend far beyond just the lift truck to include fleet and operator management technologies; warehouse products and design services; training for operators, supervisors, pedestrians, and technicians; and responsive and efficient service. This fully-integrated approach results in a comprehensive solution designed to achieve optimal results.."

Welber also noted that Crown continues to help customers understand that the lowest cost product does not provide the lowest cost of ownership.

"Crown's success is measured by the value of the customer's experience. Our employees appreciate and understand their role in creating the best experiences for our customers. Our goal is not only to be a great material handling provider, but to be one of our customers' best business decisions," said Welber.

The company currently has 19 manufacturing facilities, 500-plus retail locations, and serves approximately 84 countries. According to Crown, its products are known globally for design excellence and have earned more than 100 prominent international design awards.

"The company continues to lead through innovation in connected technologies, warehouse automation and the application of data and artificial intelligence to help customers manage and grow their businesses with confidence," concluded Welber.

According to Welber, its vertical integration and service sets the company apart.

"Crown employs a vertically-integrated manufacturing approach, building up to 85% of the components that go into our lift trucks. This promotes superior quality, flexibility to manufacture a comprehensive range of lift trucks, consistency in global production standards, and environmental practices

We believe successful wealth management requires a good strategy—one tied to your future plans.



savage

Plan better.

savageandassociates.com | 419.475.8665
655 Beaver Creek Circle | Maumee, OH 43537

Securities and advisory services offered through Royal Alliance Associates, Inc., member FINRA/SIPC. Insurance services offered through Savage and Associates, Inc., which is not affiliated with Royal Alliance Associates, Inc.



Commercial Services Department

We're equipped to handle a wide variety of transactions including retail, office, and industrial. We can also assist in multi state transactions and tax-deferred exchanges.



SUCCESSFULLY CLOSED ON TRANSACTIONS IN OVER 25 STATES

Back: Kellie - Andy - Sandra
Front: Liljana - Dyann - Julie - Gretta

Kellie Wheeler (419)720-1931 wheeler@midlandtoledo.com	Andy Shawaker (419)266-6833 shawaker@midlandtoledo.com	Sandra M. Hylant, Esq. (419)720-1929 hylant@midlandtoledo.com	Donald Mewhort, Esq. (419)720-1918 mewhort@midlandtoledo.com
---	---	--	---

Liljana Pounds (419)720-1908 pounds@midlandtoledo.com	Dyann Kinney (419)720-1904 kinney@midlandtoledo.com	Julie Wasserman (419)720-1914 wasserman@midlandtoledo.com	Gretta Laskey (419)720-1910 laskey@midlandtoledo.com
--	--	--	---



401 ADAMS STREET, TOLEDO, OHIO 43604
PROCESS TITLE ORDERS FASTER & MORE EFFICIENTLY

(419) 255-0126 | MIDLANDTOLEDO.COM

CONSTRUCTION REPORT

20/20 completes \$35M expansion project

Rupp/Rosebrock served as construction manager at risk for 253,000 square foot expansion

20/20 Custom Molded Plastics, a structural foam molding company for large component parts, completed its \$35 million expansion project at its Holiday City facility. The project involved constructing a new 253,000 square foot high-pressure facility in two phases, as well as investment in the world's largest high-pressure injection press, weighing 6,670 tons, according to the company.

Chad Adams, chief operating officer, 20/20 Custom Molded Plastics, said, "The first phase was the addition of a combination production and warehouse building totaling 148,000 square feet to house all of our high pressure injection molding presses. The second phase was strictly a warehouse addition of 105,000 square feet continuing from the first construction for storage of finished goods."

Rupp/Rosebrock, Inc., a Liberty City-based general contractor, was the construction manager at risk for the expansion and David L. Geringer, PE, from Archbold was



20/20 Custom Molded Plastics' expanded facility in Holiday City

the architect.

Other subcontractors and suppliers for the project included A. Hattersley & Sons Inc.; Air Force One, Inc.; Auto Trim of Northwest Ohio; Bartels Electric; Bohl Crane; Bullseye Machines, Inc.; Dennis Gerken Construction; Fitzenrider Inc.; Freedom Fence, LLC; Gilson Screen, Inc.; Hanson Graphix; Henry Gurtzweiler, Inc.; Koorsen; Lakeside Interior Contractors, Inc.; Linde, LLC; McCormick Equipment; McKibben Mechanical & Electrical; Milacron; MLS Engineering; Nofziger Door Sales, Inc.; Owen's Electrical Contractors & Engineers; Pflager Locksmiths; Relentless IT, Inc.; Stryker Welding; Sunn's Painting; Swanton Welding; Trane; Van Vlerah Mechanical; Vulcan Fire Protection; W.M. Excavating; and Wyse Crane Service.

According to Adams, the first phase started in late 2017 with the removal of over 4,000 loads of dirt. Production started in the new building in June 2019, and the second phase (...continued on page 4)



The biggest opportunities are sometimes the hardest to see. When you work with William Vaughan Company, our trusted advisors help you see the big picture and maximize your opportunities.

We won't just tell you what you want to hear, but exactly what you need to hear.

Want a more visionary accounting advisor? The choice is right in front of you.



WILLIAM VAUGHAN
COMPANY

An Independent Member of the BDO Alliance USA

145 Chesterfield Lane | Maumee, OH 43537 | 419.891.1040
wvco.com



RUPP ROSEBROCK INC
CONTRACTORS • MANAGERS

20/20

...Continued from page 3

finished in February of 2020.

“The pressroom in this new building is 55 feet high, which is 15 feet higher than the press area in our original building. This

is located in the middle of the building, with 50 feet on each side to allow raw materials to move to the back side of the presses.

“Finished goods will flow down the middle on the front side of the presses. This layout helps reduce congestion from forklift traffic,” explained Adams.

David Rupp, one of the partners at 20/20, previously told *Toledo Business Journal*,

facility expansion is designed around a new 6,670-ton Cincinnati Milacron press to house the largest high-pressure machine in North America.”

Rupp also noted that although 20/20 specializes in large part, low-pressure injection / structural foam molding, its low-pressure customers now have large part applications that require high-pressure presses.

Adams noted that the other equipment added to the facility includes 12 high-pressure plastic injection presses ranging from 375-ton to 6,750-tons.

“Seven of the presses are new purchases and five are being relocated from the original building. The new presses are supported by accessory equipment essential to the injection molding process such as material blenders, material transfer and feed equipment, a chilled water system, and finished product wrapping and packaging equipment. There’s also two cranes – one utilizing a 125-ton and a 75-ton hook, the second crane employing a 30-ton and 15-ton hook,” said Adams.

20/20 is a fully automated manufacturer with robots on every machine and, according to the company, it has the largest variety of low-pressure machines in the industry.

The company manufactures for a variety of industries, and some of the products it manufactures includes pallets, bins, tool boxes, swimming pool panels, golf cart floors, waste water chambers, burial vaults, in-ground irrigation and utility chambers, shelving, drainage grates, and basement windows to name a few.

According to Adams, the company is planning to add about 100 jobs at the Holiday City facility.

“I would like to thank everyone who was involved in the project and would like to thank everyone who has made 20/20 Custom Molded Plastics successful over the years. We

“The Holiday City expansion is to accommodate the new high pressure ‘mega’ parts requirements. Until now, these large part ideas were just ideas, but now our customers have a machine that is capable of turning their ideas into parts. The high-pressure facility expansion is designed around a new 6,670-ton Cincinnati Milacron press to house the largest high-pressure machine in North America.”

-David Rupp, partner, 20/20 Custom Molded Plastics



One of 20/20 Custom Molded Plastics' presses in its expanded facility

was necessary to have clearance when setting molds in the large 6,750 ton press. The new building was designed to make the flow of production more efficient than our original building as well,” said Adams.

He went on to explain that the pressroom

“The Holiday City expansion is to accommodate the new high pressure ‘mega’ part requirements. Until now, these large part ideas were just ideas, but now our customers have a machine that is capable of turning their ideas into parts. The high-pressure

would not be in this position without our customers, our vendors, and most importantly, our great employees,” concluded Adams.

A large graphic with the text "STEEL & METALWORKING" in bold white letters. The background is a green and orange halftone pattern with faint images of industrial machinery and a person working.

FOR ADVERTISING INFO, CALL
419.865.0972

SPACE RESERVATION DEADLINE: **04.20.20**

A SPECIAL SECTION IN THE NEXT

**LAKE ERIE WEST
MANUFACTURING
& CONSTRUCTION
NEWS**

Ohio local governments sign OneOhio agreement

Ohio's local governments encompassing more than two-thirds of the State's population have signed on to OneOhio, a plan to jointly approach settlement negotiations and litigation with the drug manufacturers and distributors of opioids, according to Ohio Governor Mike DeWine and Ohio Attorney General Dave Yost

Commitments were received from local governments representing more than 9.8 million Ohioans, or 85% of the State's population of 11.7 million. The list includes 73 of Ohio's 88 county governments, with participation from rural, suburban, and urban areas alike.

All votes cast for OneOhio membership were unanimous.

"I am pleased that Ohio's communities have agreed to come together as OneOhio," said DeWine. "It's a simple concept, but when we are united, we are stronger. OneOhio puts us in the best position to face the drug companies that did so much to destroy lives and communities when they got Ohioans hooked on their highly addictive products."

"When it comes to the opioid crisis, almost all of us are in the same boat," said Yost. "This agreement formalizes our intent to stand together. We are stronger when we're united."

OneOhio provides a mechanism for the distribution of any opioid settlement funds and outlines how the funds can be used. Specifically:

- 30% of the funding will be set aside for

community recovery, money that will go directly to every Township, Village, City, and County in Ohio – more than 2,000 in all – to address the immediate needs of residents

- 55% will be set aside for the creation of a statewide foundation that will develop and oversee the funding of short-term and long-term planning that local communities need to continue to address this crisis

- 15% will go to the State of Ohio, to be used to leverage statewide buying power to offer prevention, treatment, and recovery support services

OneOhio, according to officials, ensures a settlement for Ohio that recognizes that every corner of the state has been hit hard by the crisis. It focuses funding on programs that address prevention, treatment, and long-term recovery; criminal justice; and public awareness costs that promote the overall health and well-being of Ohioans. Equally important, the plan ensures that these funds are preserved and flexible over time as a way of helping the State combat the ever-evolving drug problem.

"The OneOhio plan is a collective effort to bring money back to Lucas County. It will dedicate resources back to our community and the people who were hurt, helps prevent people from getting hurt in the future, and holds the drug and pharmaceutical companies accountable," said Lucas County Commissioner's president Tina Skeldon Wozniak.



SDC is the **SUPERIOR CHOICE** in group dental benefits



A Medical Mutual Company

800.762.3159 | superiordental.com




You have a world to explore.
You have a passion to follow.
You have a desire to enjoy all that life has to offer. And at Fifth Third Private Bank, we're here to help write your story.

When you partner with us, we'll provide you with a dedicated, local advisor, backed by a team of financial professionals and digital solutions.

Together, we can achieve even more.

Let's write your story.

53.com/privatebank



FIFTH THIRD PRIVATE BANK

Fifth Third Private Bank is a division of Fifth Third Bank, National Association. Member FDIC.

We're going to be OK.

COVID-19 has created stress for everyone. But things will eventually right themselves. And when they do, DBR & CO is well-equipped to assist clients in building and strengthening their financial position going forward:

Financial Planning can grow your wealth without relying on stocks. Now is an excellent opportunity to refinance your mortgage or other debt. And current losses could offer some positive tax planning options. www.dbroot.com/financialplanning

DBR & CO's repeatable **Four Seasons Asset Allocation Process** is designed to successfully navigate downturns in the markets and the economy. www.dbroot.com/assetmanagement

DBR Fiduciary Plan Solutions offers unmatched guidance for your 401(k) or other qualified company retirement plans for long term success – beyond retirement. www.dbroot.com/fiduciary

We're here to help. If you have any questions about your financial situation, contact:

Paul Abendroth, AIF®
Managing Director
pabendroth@dbroot.com



Financial Advice, Delivered Personally.

811 Madison Ave. 7th Floor • Toledo, OH 43604 •
419-574-9341 • dbroot.com/toledo



Cooperative
Business Services

WHAT CAN CBS DO FOR YOU?

Your local credit union cooperative
working to fund commercial loans.

- Loans up to \$10,000,000 +
- No Prepayment Penalties
- Attractive Long Term Interest Rates
- Personalized Service

Your Business Lending Partner SM

New business filings start strong in 2020

After another record-setting year in 2019, 12,069 new businesses filed in Ohio in January, an increase of 2,998 from December, according to Ohio Secretary of State Frank LaRose.

“Ohioans are utilizing our strong economy to pursue the American dream, and they’re choosing to do it right here in Ohio,” said LaRose. “As we begin the new year, we’ll continue our efforts to provide the resources they need to succeed.”

January’s numbers indicate a strong start to 2020 for Ohio entrepreneurs, building off yet another record setting year in 2019 that had more than 130,000 new business filings.

Ohio is also seeing greater amount of Ohioans taking advantage of quick-and-easy online filings through Ohio Business Central. In January, online filings made up 85% of all business filings, noted the Secretary of State’s office.

New business filings are classified as forms filed with the Ohio Secretary of State that declare the formation of a business entity, including for-profit, non-profit and professional corporations, limited liability companies, partnerships, limited partnerships and limited liability partnerships. Filing as a business in Ohio does not guarantee the company will begin operations, be profitable, or create jobs.

MetalX has fire in sheet iron pile at Delta facility

MetalX, LLC confirmed that a fire was detected in a pile of scrap metal near the shredder at its Delta processing facility at approximately 1:30 pm on Monday, March 9.

Area fire departments were notified quickly, and firefighters from Delta, Toledo, Wauseon, Napoleon, Metamora,

Swanton, Liberty Center, and Lyons worked alongside company crews to make sure the fire was completely extinguished without incident. The fire was under control within a few hours and was completely extinguished by early evening, noted MetalX.

There were no injuries or damage to property or equipment, and in addition, there were no issues with water run-off or air quality as a result of the event. The source of the fire is believed to have been caused by combustible material that was embedded in a load of obsolete scrap received earlier that morning, according to MetalX.

Clyde Billips, vice president of operations, MetalX, said, “The fire started in a small pile of sheet iron, which is a grade of obsolete scrap consisting of old metal siding, auto parts, whole autos, appliances, and similar types of scrap.”

He added, “Fire breaks within the feed stock receiving area prevented the fire from spreading to other scrap metal piles, so the fire itself was well-contained, but the visible smoke was a result of the non-metallic items in that grade of scrap. Our facility does not accept any hazardous material, so there are no concerns about impact to human or animal health.”

Billips concluded, “Our crews have had extensive training in this type of fire response and emergency management practices, which allows our crane and heavy equipment operators to work in conjunction with firefighting crews to get to the source of the fire very quickly. Although any fire is one too many, we are pleased that the situation never got out of hand and was extinguished quickly without injury or incident. Following last year’s larger event, area firefighters and company personnel have worked together to develop and implement an exemplary response protocol that was clearly effective yesterday, and we greatly appreciate their efforts.”

MetalX also reported that the facility had resumed full and normal operation on March 10.



Joe Bajás

419.214.0033
www.cbscuso.com



John M. Skeldon



Area Metalworking Companies

Listed by Number of Local Employees

	# Local Employees	Founded Locally	Top Local Officer	Primary Services Offered	Types of Metalworking Services Provided	Certifications
Wauseon Machine and Manufacturing, Inc. 995 Enterprise Ave - Wauseon	195	1983	i.n.a.	OEM; Job Shop CNC Machining; Wire & Plunge EDM; Surface Grinding; ID / OD Grinding & Fabrication Services	Toolmaking; Precision CNC Machining; CNC Contract Machining; Stock Tooling Program; Tooling Dev; Custom Machinery & Fixture Design & Build	ISO 9001:2015
APT Manufacturing Solutions 801 Industrial Dr, PO Box 88 - Hicksville	145	1996	Anthony Nighswander	Robotic Automation; CNC Production Machining; Welding & Fabrication	CNC Production Machining; Welding & Fabrication	ISO 9001:2008; FANUC Authorized Integrator
Lomar Machine & Tool Co. 135 Main St - Horton, MI	125	1976	Ron Geisman	OEM; Fabricator; Machining	CNC Laser Cutting; CNC Metal Forming; Welding; Powder Coating; Liquid Painting	ISO 9001:2015
Swanton Welding & Machining Co. Inc. 407 Broadway St - Swanton	120	1956	Norm E. Zeiter	Steel Fabrication	Welding; Machining; Rolling; Bending; Beam Line; Engineering	E1-1; Various Other Specialty Welding Certifications
Miller Precision Mfg. Ind. Inc. 131 Progressive Dr - Ottoville	85	1988	Jim Miller	Precision Machining	Turning; Drilling; Tapping; Milling; Boring; Fabrication	ISO 9001:2008
Lefere Forge 665 Hupp Ave - Jackson, MI	70	1929	Pete Lefere	Closed Die Steel Hot Forgings 5 Pounds to 160 Pounds	Forgings; Gears; Hubs; Spindles; Valves; Wheels	BS EN ISO 9001:2008
The Yarder Manufacturing Company 722 Phillips Ave - Toledo	68	1930	Richard Yarder	Sheet Metal Fabrication; Laser Cutting; Forming; Welding; CNC Punching; Finishing; Painting	Sheet Metal Fabrication; Laser Cutting; Forming; Welding; CNC Punching; Finishing; Painting	—
Century Die Company, LLC 215 N Stone St - Fremont	67	1946	Tim Myers, GM	Mold Fabrication; Ancillary Tooling & Fixtures; Contract Machining	Mold Repair Services; Turning w/ Live Tooling; Surface Grinding; CNC Milling up to 5-Axis; Water Jet; Welding	
Toth Industries, Inc. 5102 Enterprise Blvd - Toledo	65	1955	Richard Toth	Production Contract Machining	CNC; Production Contract Machining	ISO 9001:2015
Absolute Machine Tools 7420 Industrial Pkwy - Lorain	55		Klaus Miller	Importer/Distributor of CNC Machine Tools	Importer/Distributor of CNC Machine Tools	
Findlay Machine & Tool, Inc. 2000 Industrial Dr - Findlay	50	1940	Rex Reimer	Custom Machined Parts	Custom Machined Parts	ISO 9001:2015
American Broach & Machine Company 535 S Mansfield St - Ypsilanti, MI	49	1918	Mike Casto	Manufacture Broach Tools & Broach Machines	CNC	QS 9000 / TE Supplement
Maumee Valley Fabricators, Inc 4801 Bennett Rd - Toledo	48	1978	Patrick Copeland	Tanks, Stacks, Plate & Tube Weldments in Mild Steel, Stainless & Aluminum	Custom Fabrication (Rolling, Forming & Welding); CNC Machining	AWS D1.1 Certified Welders & Journeyman Machinists

...continued on page 8

Mitutoyo BALDOR HARVEY TOOL JET *INSIZE* brown & sharpe.

JET GH-1880ZX Gap Bed Lathe



Specifications

- 27-1/2" Swing in Gap
- 18" Swing, 80" Centers
- 3-1/8" Spindle Bore
- 61 Inch Threads
- 24 Metric Threads
- 9" Cross Slide
- 7-1/2 HP, 220/460V

Standard Equipment

- 10" 3-Jaw Chuck
- 12" Face Plate
- 5-Pc. Quick Change Tool Post Set
- Steady Rest
- Coolant System
- LED Worklight

Options Included

- Accu-Rite 200S 2-Axis DRO
- Taper Attachment
- 5-C Collet Closer

#321493
List Price: \$38,652.86
SALE PRICE: \$27,500.00

Save on Freight!
FOB, Holland, OH

7341 Airport Highway • Holland, OH 43528
P. 419-866-5507 or 1-800-525-8665 • F. 419-866-4263 or 1-800-525-8666
www.tstool.com • sales@tstool.com

T&S Tool & Supply Co. Est. 1979

GUHRING E2B Starrett APEX Kennedy MONSTER TOOL CO Huot



The world of manufacturing is one of change, uncertainty, and variability.

Axis Engineering Group understands this world and helps manufacturers achieve control, clarity, and confidence.

- 24/7 Emergency Support
- Electrical / Mechanical Engineering
- PLCs, HMI, Data Collection
- Robotics
- Vision and Inspection Systems
- Control Systems

Delivering manufacturing peace of mind since 1998.



AXIS
ENGINEERING GROUP, LLC
Delivering manufacturing peace of mind™

419.872.2500 | www.axisengineering.com



Your premier extrusion blow mold manufacturer

We offer:

- New Molds along with Repairs & Refurbishments, Ancillary Tools
- Automation Fixtures, and Contract Machining
- Fully staffed with in-house Engineering and Project Engineering Managers
- SolidWorks and Unigraphics, ability to import most formats including IGES, STEP, and PARASOLID.

Equipment:

- Milling, Over 20 CNC Machines up to 5-axis, Bridgeports, Grinding
- Turning w/live tooling, Water Jet, Welding, Grit-Blast

PH: 419.332.2693 www.centurydie.com Email: sales@centurydie.com

Area Metalworking Companies

...continued from page 7

	# Local Employees	Founded Locally	Top Local Officer	Primary Services Offered	Types of Metalworking Services Provided	Certifications
Pioneer Industrial Systems, LLC 16442 US Hwy 20 · Alvordton	40	1998	Todd Hendricks	Design, Build & Service Industrial Automation & Robotic Systems	Design, Build & Service Industrial Automation & Robotic Systems; Performed Maintenance; Upgrades; Installation & Programming Support	FANUC Integrator; Strategic Market Specialist
Progress TAC 619 S Church St · Clyde	35	1968	Andrew Kingsborough	Engineered Design & Build of Custom Automation & Systems Integrator	CNC Machining; Welding; Fabrication; Light Tight Laser Enclosures	Six Sigma; Safety Laser
Unique Tool and Mfg. Co., Inc. 100 Reed Dr · Temperance, MI	31	1963	Daniel Althaus	Manufacture Sheet Metal Stampings	Manufacture Sheet Metal Stampings	ISO 9001:2015
Andersons Fab Shop 415 Illinois Ave · Maumee	30	1947	Rex Reimer	Custom Stainless, Aluminum & Steel Fabrication; Conveyors & Specialty Material Handling Equipment; Railroad Car Parts & Repairs; Engineering	Custom Stainless, Aluminum & Steel Fabrications; Blasting & Painting; General Fabrication	AWS Certified Welders
Machine Tool Design & Fab, LLC 1401 Sandusky St · Fostoria	27	1976	Chris Eastman	Design & Fabrication of Custom Machinery & Machine Components	Design & Build Custom Machinery; Fabrication, Milling & Turning of Steel, Stainless Steel, Aluminum & Plastics; Waterjet Cutting of All Materials	Denso Robotics Certified Seller
Custom Machine, Inc. 3315 W Twp Rd 158 · Tiffin	26	1979	David W. Hammer	Job Shop	CNC Milling & Turning; EDM; Grinding; Fabrication; Inspection Fixtures	ISO 9001:2015, BBB Accredited
Architectural & Industrial Metal Finishing Co., LLC 1091 Sunnyside Rd · Vermilion	25	2003	Chris Morris	Powder Coating & Laser Cutting	Powder Coating & Laser Cutting	ISO 9001:2015
Project Designed & Built, Inc. 5949 American Rd E · Toledo	22	1998	Kenneth Martin	Custom Automation & Material Handling Equipment Manufacturer; Robot Integration; Custom Machinery; Inspection; Safety Enhancements; Etc.	CNC	
QC American / High Gear Tools 575 S Mansfield · Ypsilanti, MI	18	2007	Fran Mao	Metal Cutting Tools; Broaches; Hob; Sharper & Shaver Cutters	Cutting Tools	—
Bohl Machine 1104 Custer Dr · Toledo	15	2013	Doug Bohl	Custom Material Handling Equipment; Engineering; Fabrication; Machining; Installation; Service	Custom Material Handling Equipment; Engineering; Fabrication; Machining; Installation; Service	AWS D14.1 Welders
Rapid Machine Inc. 610 N State St · Pioneer	15	1978	Jim Spangler, President / Owner	Manufacturing; CNC Machining; Machining & Tooling;	Turning; Milling; Grinding; Welding; Fabrication Complete CNC Job Shop	—
Latanick Equipment 720 River Rd · Huron	14	1973	Richard Poorman	Metal Fabrications; Custom Machinery; Machined Parts	Metal Fabrications; Custom Machinery; Machined Parts; On-Site Welding; 3D Printing,	Many Welding Certifications
Salenbien Welding Service, Inc. 460 Roosevelt St · Dundee, MI	12	1972	George J. Salenbien, Jr.	Custom Steel Fabrication of Steel, Aluminum & Stainless	Shearing; Forming; CNC Burning; Rolling; Machining & Welding; Powder Coating	—
Builders Steel Services 4057 N Detroit Ave · Toledo	11	1992	Stephen Greer	Steel Fabrication; Welding; Shear & Forming; Cut to Length; Punch & Drill	Cutting, Drilling, Fabricating Steel; We Deal Mainly w/Beams, Tube, Sheet, Pipe & Merchant Bars Such as Angle & UM Plate	AWS D1.1 Certified; BBB Member
NM Hansen Machine & Tool Co. 4015 Dewey St · Toledo	10	1908	Roger Burditt	Aerospace Igniter Bodies	CNC Milling; CNC Turning	ICMfgE. CEng.
Seeger Metals & Plastics, Inc. 1315 E Manhattan Blvd · Toledo	10	1881	Bruce Seeger	Distributor of Non-Ferrous Metals & Mechanical Plastics	Band Sawing; Plate Sawing; Shearing	—
Taylor Material Handling & Conveyor 2910 Glanzman Rd · Toledo	10	1979	Bob Knapik	Engineering; Standard/Custom Material Handling Equipment; Conveying Equipment; System Integration; Steel Fabrication & Installation	Steel Fabrication & Installation; Conveyor Systems; Gorbelt Ergonomic Work Cells; Southworth Lift/Positioning Equipment	—
Figley Stamping Company 401 Agnes St · Defiance	6	1952	Chris Slee	Metal Stampings	Furniture; Electrical; Industrial & Consumer Metal Stampings	ISO 9001:2008
Superior Bar Products, Inc. 1710 Spruce St · Defiance	6	1988	Mark Crandall	Precision/CNC Machining	CNC Machining; Screw Machine; Products; Automatic sawing; Secondary Operations; General Machining; 50 parts to 5 million	ISO 9001:2015
Butz Welding & Fabricating Ltd 1542 Champlain St · Toledo	3	1947	Reggie Butz	Custom Fabricated Metal Products; Welding & Fabricating Steel, Aluminum, Stainless	Welding; Forming; Punching; Milling; Drilling; Sawing; Plasma Cutting	—

Published 04-20; List includes only those Metalworking that responded by deadline; i.n.a. = information not available

FFCU

...Continued from page 1

was because we are out of space, and the other part is we would like to put everyone under the same roof, pick up some efficiencies, make it more attractive for our members so they don't have to go from one building to another for different services."

According to Jones, the new branch will have five drive-through lanes and a designated ATM / night deposit lane. The first floor will have a contemporary open lobby, teller area, and reception space. The second floor will mainly be used as its headquarters, offering support for all of its branches, with room for future expansion. There will also be a history feature wall in the lobby, open workspace / meeting areas, and an employee learning center.

Jones noted that Firelands FCU will offer the same products and services it currently offers – loans, saving and checking accounts, mortgages, credit cards, and other

convenient electronic services like mobile and online banking.

There's also some additional office space Firelands FCU won't use right when it moves in, so according to Jones, there is some opportunity to add jobs to the City as well.

The project broke ground in April 2019 and Firelands FCU plans to move in this spring. Janotta & Herner, Inc., based in Monroeville, was the general contractor for the project.

Kyle Stang, project manager for Janotta & Herner, explained that there was legwork done ahead of groundbreaking for the project.

"Firelands FCU was committed to keeping the branch and headquarters in downtown Bellevue. With that, approximately six residential houses and one commercial property had to be acquired, abated of hazardous materials, and demolished to make space for the new building," said Stang. "Any time you are taking on an urban renewal project of this size, you always have several surprises to what may be hiding underground. The team did a great job identifying and resolving

issues all while maintaining the quality and schedule expectations of the project."

"We began purchasing the buildings towards the tail end of 2017 and into the beginning of 2018. The properties that we bought were investor properties – all but one house – so they were rentals. Two or three of them were vacant. So they weren't the prettiest properties on the block and being able to get those down really has done a lot," said Brett Montague, president / CEO of Firelands FCU.

"It really cleaned up the area. The new branch is located right as you enter town under a main overpass, so those houses were a main focal point and now we are, and it looks a lot nicer," added Jones.

According to Montague, since Firelands FCU acquired the properties far in advance of groundbreaking, it was able to donate the houses deemed safe enough to Erie Huron Ottawa Vocational Education (EHOVE) Career Center, a public vocational school in Milan, for its fire program. Montague noted that the school did controlled burns on the houses, which provided fire training to its local

fire departments and students.

Montague also explained that the credit union has continued to grow throughout the years.

"I started here in 2007 and we were about \$135 million in assets at that time. We are now at \$300 million at the end of 2019, so we have more than doubled in that time. I think a big part of our success is we always strive to provide quality member service, new products and services to set ourselves apart, and keep people interested in having their accounts here and having them be accessible," said Montague. "There's also not a lot of companies who are looking to invest \$5 million-plus into Bellevue. This is where we started and it was important to stay here and make that investment in the community. I think people see that, and we always try to stay involved in the community."

According to Jones, in 2019, Firelands FCU also expanded its charter to include Erie County.

"We will be looking for opportunities to serve that community in the near future," concluded Jones.

CELEBRATING ARCHITECTURE



**AIA
Toledo**

The following is a letter from the 2020 AIA Toledo president on this year's Celebration of Architecture Week:

The evolving health pandemic and unprecedented state of our economy is proving to be a true test of resiliency. The economic impact of the coronavirus remains uncertain as we are being forced to adapt and evolve in ways that we never imagined.

As architects, we design spaces to adapt to a variety of situations and needs. As we live through this remarkable time, we are experiencing firsthand the impact the built environment has on

our day-to-day lives. We are being affected personally and socially through the sudden closing of schools, restaurants, sporting events, and large gatherings. Professionally we are dealing with a new uncertainty and adjusting in real-time as news and updates change at a rapid pace.

The Toledo Chapter of the American Institute of Architects recently made the decision to postpone the 16th annual northwest Ohio "Celebration of Architecture" week, previously scheduled from April 20th – April 25th. Our chapter is currently looking into re-scheduling this exciting week and will keep the community updated with activities and new dates when they become available. The celebration is an opportunity to create greater awareness in our community for the positive impact that architecture and design have in improving the built environment

where we live, work, and play. The celebration also provides a venue for architects to interact with each other and amongst our many valued partners and community members who allow our profession to thrive.

As the terms "flattening the curve" and "social distancing" become commonly used in our vocabulary, it is imperative for architects to be a part of the solution in relieving the burden that our health systems and essential personnel are facing under this current crisis. As we look at public spaces, design will need to evolve to reduce the risk for infections and allow for social distancing to occur naturally and effortlessly.

The growing global coronavirus pandemic will leave a profound mark on society in the way people relate to each other and to public spaces. I am confident that the architecture profession will use this crisis to develop innovative



solutions that positively move our community forward.

Craig A. Pickerel, AIA
2020 president, AIA Toledo

WILSON BARRETT
BATTERY POWER SYSTEMS

Your source for industrial batteries & chargers.

- New & reconditioned forklift batteries
- Industrial chargers
- Parts & service

419-662-9523
wilsonbarrett.com

PRINCIPLE BUSINESS ENTERPRISES
55,000 SF Southview Production Expansion
2019 AIA Toledo Honor Award
2018 Varco Pruden Best of Warehouse Hall Of Fame Award

MACPHERSON ARCHITECTS INC / 2MA
ARCHITECTURE | INTERIORS | PLANNING
www.2marchitects.com

125
1895 **Lathrop** 2020
YEARS

THIS YEAR WE CELEBRATE

For the last 125 years, the Lathrop Company has had the honor of building Toledo's future. A lot has changed since our founding in 1895, but our values, vision and dedication have remained the same. As we celebrate this milestone throughout the year, we will reflect on who we are, what we've done and how we've played an integral role in the building of Toledo's past, present and future.

Join us at www.lathrop125.com

Inspiring growth through urban planning and design

For nearly two decades, the Toledo Design Collective (TDC) has made an impact on community development within Toledo and its surrounding communities.

development, community engagement, and more. With this expertise, TDC is able to work directly with neighborhood groups and organizations throughout

are experts within their neighborhood, and TDC helps them articulate and present the dreams they have for their neighborhoods.

TDC staff and board members work closely with local and State universities to mentor the next generation of designers and planners through its internship program. TDC's interns help carry

submissions of projects.

One great success story of community involvement and now implementation of a plan is TDC's partnership with the Junction Coalition, the neighborhood leaders of Junction. In 2015 TDC became involved with the Junction neighborhood in a small greenscape design plan that looked specifically at opportunities to de-



TDC was founded in 2001 with the core belief that thoughtful urban planning and design have the power to reshape individual lives, neighborhoods, and the greater City of Toledo.

TDC's working board and staff has a collective expertise in architecture, city planning, real estate and urban

Toledo to help equip and empower the community. Through community workshops, public meetings, and neighborhood gatherings the TDC meets communities where they are in order to learn what community needs and desires are. TDC believes that, at their core, these neighborhood residents and stakeholders



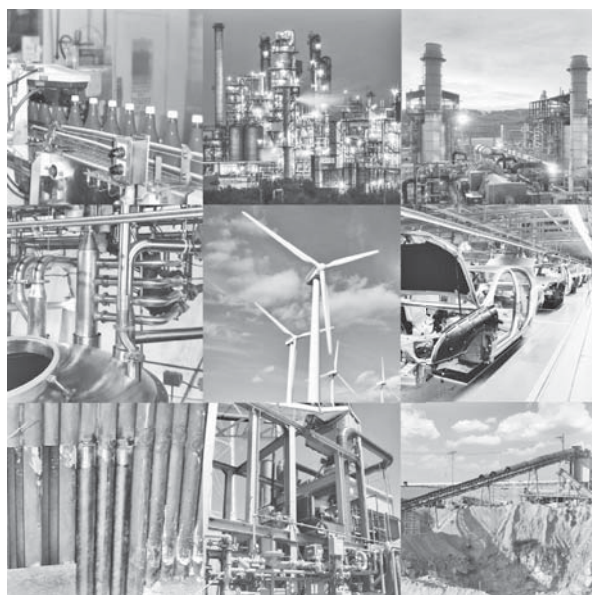
projects forward through the entire process from initial meetings with neighborhood residents and stakeholders, to the final design visions and presentations, and

velop a business corridor. From that 2015 plan, TDC began to assess conditions in the entire Junction neighborhood. There (...continued on page 11)

RMF | Nooter

Expect more.

Mechanical and Electrical Industrial Contracting



- Machinery Moving & Setting
- Rotating Equipment
- Rigging & Heavy Lifting
- Pressure Vessels, Boilers, Tanks
- Piping
- Electrical
- Plumbing
- Welding & Fabrication
- Structural Steel
- Material Handling Systems



LARGE COMPANY CATEGORY

419.727.1970
rmfnooter.com

915 Matzinger Rd. | Toledo, OH 43612

SSOE GROUP IS A PROUD SPONSOR OF AIA'S CELEBRATION OF ARCHITECTURE

Come work for a company that is committed to designing and building the future for our clients, colleagues, and communities.



Great Place To Work

Certified JUN 2019-JUN 2020 USA

ROOTED IN TOLEDO SINCE OUR FOUNDING IN 1948, WE DELIVER GLOBAL SERVICES THROUGH 20+ OFFICES WORLDWIDE.

SSOE® www.ssoe.com/careers

ARCHITECTURE • ENGINEERING CONSTRUCTION MANAGEMENT



MOSSER

www.mosserconstruction.com

Building with Integrity Since 1948

General Contracting
Design/Build
Construction Management

Commercial
Industrial
Healthcare
Educational
Athletic Facilities
Worship
Public
Water & Wastewater Treatment
Highway/Bridges
Pre-Engineered Metal Buildings



It's our culture and expertise that gets projects through the finish line.



Fremont (419) 334-3801 • Maumee (419) 861-5100

AIA Toledo Design Awards recognize design excellence

The AIA Toledo Design Awards, a biennial program, seeks to recognize design excellence for private and public projects of quality, and honor works of distinction envisioned or created in northwest Ohio. The awards stand as an affirmation of the diversity and quality of the area's contemporary regional architecture. The AIA Toledo Design Awards program is founded on

the belief that excellence knows neither region nor style, and is not a function of budget, project size, or building type.

Last year, AIA Toledo celebrated 24 years of awarding architectural design excellence. There were 17 submissions representing seven northwest Ohio architectural firms / architects. The entries were reviewed on April 9, 2019 in New York by

an independent jury of architects, where two entries were selected to receive Honor Awards and three entries were selected to receive Citation Awards. Awards were presented at the AIA Toledo Design Awards Gala held at the new Poco Piatti in downtown Toledo in April 2019.

Elizabeth Leber, AIA, a partner at the firm of Beyer Blinder Belle Architects and

Planners in New York, presided over the 2019 Design Awards Jury. Leber acted as the lead planner working with the Toledo Museum of Art (TMA) in the development of its recent master plan. Her familiarity with northwest Ohio and her national perspective made her a stand out candidate as the jury chair for the program, noted AIA Toledo officials.

Inspiring growth ...Continued from page 10

was a clear need and desire from the Junction residents for an overall Master Plan that would identify where the neighborhood has been, where it is today, and where it would like to be.

TDC reviewed the data, including that land in the neighborhood is currently 60% vacant and that number is increasing, and overall, the neighborhood has


experienced disinvestment in housing stock. TDC helped host multiple day-long workshops with residents and businesses on topics such as housing, public space, business, and education. TDC met with the Junction Coalition regularly to review progress of the data collection and the framework and designs suggested based on resident engagement. To see

the Junction Neighborhood Master Plan in full visit: <https://go.aws/2QsUPJS>

The Junction Master Plan was later adopted as an amendment to the City of Toledo's 2020 Comprehensive Plan in January 2019. Since the adoption of the Master Plan, the Junction Neighborhood has been able to hire a community organizer and part-time staff to begin to work on implementing the plan. There has been an established Housing Committee lead by the Junction Coalition, which has used the Master Plan to build up housing resources and drive

recommendations for rehab and new housing in the neighborhood.

Some of TDC's most recent projects include: Warehouse District Plan, Middle Grounds District Plan, Junction Neighborhood Plan, Civic Center Mall Plan, UpTown Plan, Monroe Auburn Neighborhood Plan, Vistula Neighborhood Master Plan, vision for downtown Toledo parking lots, façade program for the Borroughs neighborhood, Summit Street study, and more. For more information visit TDC's website: <https://toledodesigncollective.org/>



Building relationships
project after project.
Since 1946

A.A. Boos & Sons, Inc.
General Contractor
Industrial · Commercial

2015 Pickle Road | Oregon, Ohio 43616
p. 419.691.2329 | f. 419.691.2057
www.aaboos.com

ENGAGE STUDIO ARCHITECTS

PO BOX 167647, OREGON, OHIO 43616 419.693.4647

QUALITY + COMMUNITY
A FULL SERVICE DESIGN FIRM
PROVIDING QUALITY PROJECTS
SERVING THE COMMUNITY.
VERSATILE EXPERIENCE FOR ANY PROJECT

ECURLEY@ENGAGESTUDIOARCH.COM




These are challenging times for all of us.

More than ever, it's important to have someone you trust to help you make business decisions.

We'll get through this together.

GJM

GILMORE JASION MAHLER, LTD
INNOVATIVE IDEAS. TRUSTED ADVICE.

An Independently Owned Member, RSM US Alliance

Maumee • Findlay
GJMLTD.COM



Devoted entirely to the regional business market, **Toledo Business Journal**, **Manufacturing & Construction News**, and **Development News** offer breaking news stories, provides marketing and sales leads, and contains proprietary local market research.

Reach out to the successful executives that turn to **Toledo Business Journal** and our other publications for local and regional news.

Call 419.865.0972 to advertise!



**THOMAS
PORTER
ARCHITECTS**

ARCHITECTURE | PLANNING | INTERIORS

8 North St. Clair | Toledo, OH | T 419.243.2400 | ThomasPorterArchitects.com

2019 HONOR AWARD WINNERS



Project Name: PBE Southview Production Expansion
Location: Bowling Green, OH
Owner: Principle Business Enterprises
Architect: MacPherson Architects Inc / 2MA



Project Name: Hart Corporate Headquarters
Location: Toledo, OH
Owner: Hart Inc
Architect: The Collaborative Inc

High-Quality Service

WE OWN IT.

Air Quality
Civil Engineering
Ecological Sciences
Environmental Engineering & Sciences
Manufacturing Infrastructure Services
Survey/Geospatial
Waste Management
Water Resources

4841 Monroe Street • Suite 103
Toledo, OH 43623
419.724.5281 • www.cecinc.com



Civil & Environmental Consultants, Inc.

2019 CITATION AWARD WINNERS



Project Name: NORTH Design
Location: Holland, OH
Owner: NORTH Design
Architect: Duket Architects Planners

THE COL LAB ORAT IVE

Architecture
Planning &
Design

www.TC.design



Project Name: Silver Lining House
Location: Perrysburg, OH
Owner: The Hall's
Architect: MacPherson Architects Inc / 2MA

Toledo / Ann Arbor



Accredited program makes growth a reality for NWO



Bowling Green State University (BGSU) has been granted Initial Accreditation of the Master of Architecture (M.Arch) professional degree by the National Architectural Accreditation Board (NAAB). NAAB accreditation is the primary means by which professional degree programs in architecture assure quality to students and the public, and graduation from a NAAB-accredited program is the preferred path for those to become future licensed architects in their state.

Accreditation of the architecture program at BGSU is a goal that has endured for over

20 years of process by teams of individuals and support from the industry. The success of reaching this goal is a relief to students,

faculty / staff, professionals, and the University as it represents the first professional degree program at BGSU. The growth of our region is enhanced with the development of future generations.

Our region is experiencing a renaissance. We are growing and local talent is present, but the concern is the ability to maintain this growth. BGSU's architecture program was established in the College of Technology in the early 1990s, however without the ability to earn an M.Arch degree, students often left our region to pursue their degree elsewhere and would seldom return. With generational trends indicating a desire for all the amenities of urban living, the possibility of students returning was beginning to feel less likely than before. This concept of future generations wanting to embrace live / work / play environments provides the first benefit of the M.Arch professional degree. For those interested in becoming an architect, the M.Arch professional degree is the shortest and most common path to licensure (along with work experience and examination). BGSU can now

serve students throughout northwest Ohio in their desire to become an architect while allowing them to live and build their environment – a direct benefit to the students.

Having an opportunity to continue or pursue an M.Arch degree in northwest Ohio, provides a strong benefit to local firms. This will allow an increase of focus on the service being provided to the built environment. Firms rely on their ability to hire students for a fresh perspective and rapid adaption to shifts in technology. Without staff continuity, firms are faced with constant training and
(...continued on page 14)

2019 CITATION AWARD WINNERS

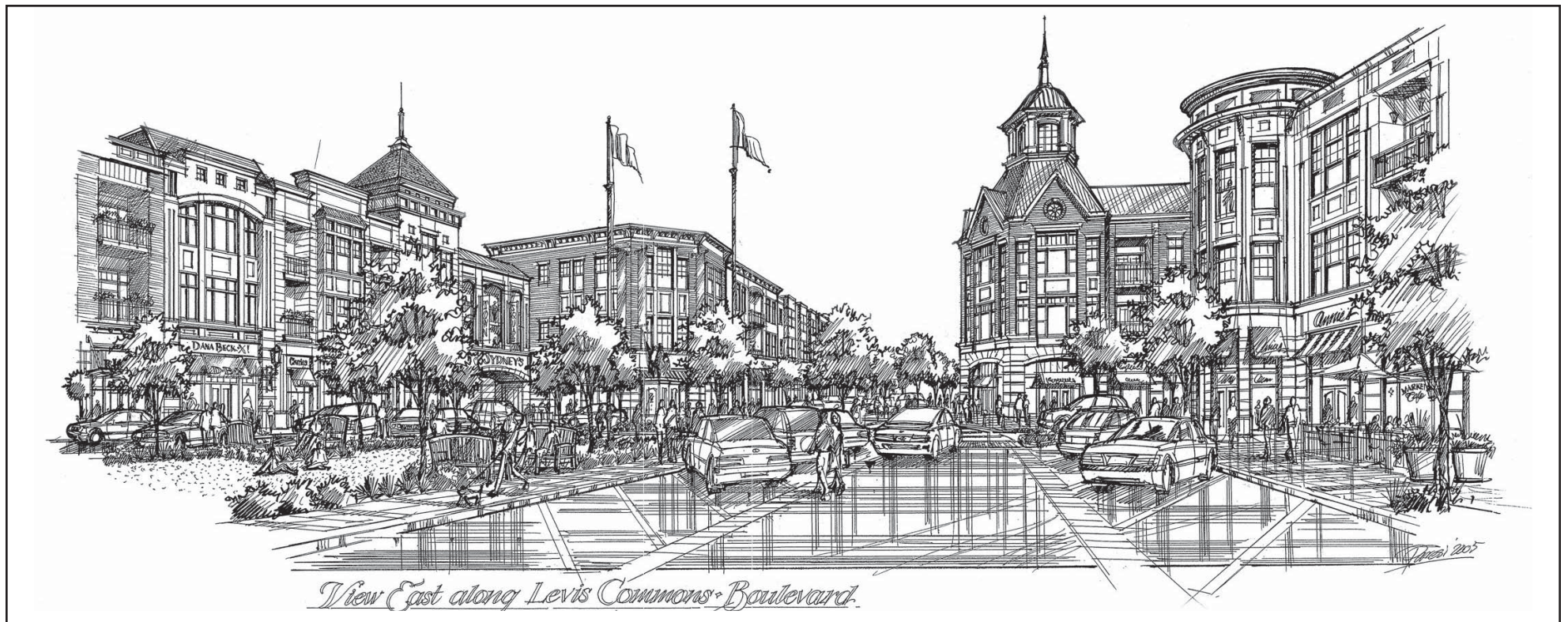


Project Name: Angela Athletic & Wellness Complex
Location: Notre Dame, IN
Owner: Saint Mary's College
Architect: The Collaborative Inc

ENGINEERS • ARCHITECTS • PLANNERS

Celebrating Architecture for Over 50 Years

419.352.7537 • WWW.POGGEMEYER.COM



“Architecture is the art and science of making sure that our cities and buildings fit with the way we want to live our lives.”

BJARKE INGELS, BIG FOUNDER AND PARTNER



We're In This Together.

Rudolph Libbe Group works with architects for the many customers we mutually serve, ensuring our communities and local businesses have useful and lasting structures.

Thank you to the American Institute of Architects (AIA) and its members. We celebrate your vision, creativity and expertise.

Accredited program

...Continued from page 13

little stability. Students will now have the option to continue their path to licensure in our region, allowing firms to develop teams with synergy. This will be a direct benefit to increasing firm productivity while enhanc-

that program. Currently, about 65% of the architects in the region are nearing retirement within eight years. This would leave us with a significant deficiency in the local market. The next generation will be transi-



ing the client experience.

Explained above is a glimpse of how this program will assist students and local firms, but perhaps the most impactful benefit is the opportunity for this program to aid in the overall growth of our region. A student with an opportunity to stay or transfer to a Master of Architecture program is more likely to set their roots in the region of

tioning into leadership roles, leaving gaps in efficient productivity. Accreditation encourages students to build their future in that region. Our locale will provide a need for roots to be set and longevity that was not present previously. As a region, it is imperative that the next generation has an opportunity to become the leaders in firms. Our communities are designed and built by teams of

architects, engineers, planners, contractors, etc., all working together to ensure community needs are met.

As architects, it is our responsibility to positively impact the built environment. The granting of Initial Accreditation for the Master of Architecture at BGSU provides opportunity for the future of the profession to flourish, leading our community, our City, our region toward continued growth filled

comprised of internal and external members that create a pathway for the students, faculty, and staff of the BGSU Department of Architecture and Environmental Design to enrich themselves and develop the skills to enhance the performance, perception, and value of the architectural profession with advice, advance, and support of the highest quality faculty and educational programs for all undergraduate



with deep rooted perspective. Enjoy the excitement that has been granted, spread the news, and embrace the reality of a growing future.

I would like to thank each individual who has given their time over the years to support this program. Congratulations.

Architecture advisory board

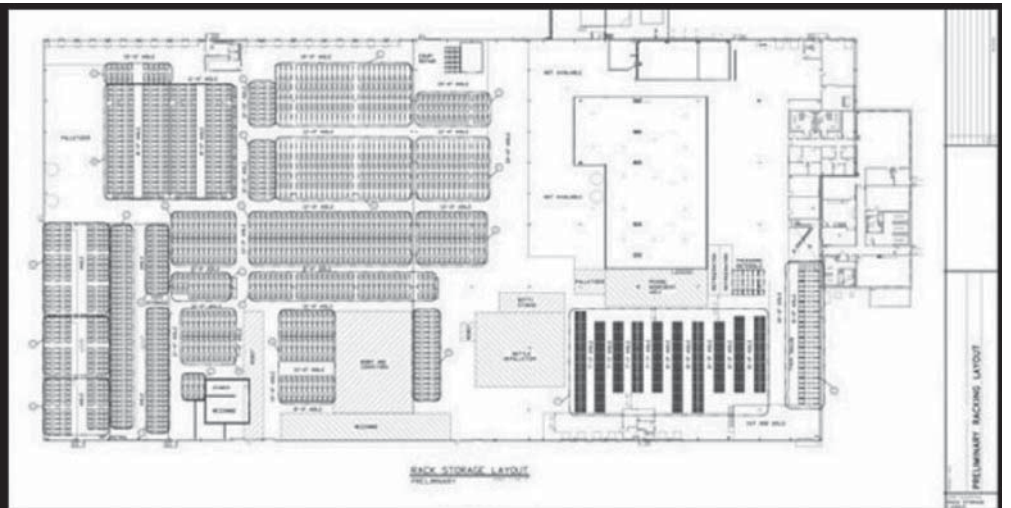
The Architectural advisory board is

and graduate programs offered by the Department of Architecture and Environmental Design.

*Ms. Erin K. Curley, AIA,
NCARB, LEED GA
President – BGSU*

*Architecture Advisory Board
CEO/Architect – Engage
Studio Architects, LLC*

DID YOU KNOW THAT MIAMI INDUSTRIAL TRUCKS, INC. OFFERS A COMPREHENSIVE DESIGN, IMPLEMENTATION + SUPPORT OF SOLUTIONS TO HELP LAYOUT YOUR FACILITY?!



Backed by years of industry experience + a multifaceted team of professionals, we provide an unequalled combination of engineering knowledge, design + material handling expertise. Our solutions include design, equipment, + controls needed to meet customer needs, along with expertise to oversee installation + staff training.

On every level, we help our customers by:

- 01 Integrating systems to maximize existing infrastructure
- 02 Designing new systems + entire distribution centers
- 03 Redesigning building configurations to improve efficiencies
- 04 Implementing the ideal equipment, controls + systems to maximize speed + efficiency

MIAMI INDUSTRIAL TRUCKS
everybody needs a lift™

End to End coverage from products to support! It would be a privilege to help you lay out your facility in the most cost efficient way.

CONTACT US TODAY!

Miami Industrial Trucks

10406 Geiser Rd. | Holland, OH | 43528

419.841.1380

MITLIFT.COM

UNDER CONSTRUCTION

A LOOK AT CONSTRUCTION PROJECTS IN OUR REGION



Surgery Center of North Central Ohio

Janotta & Herner is acting as the general contractor on the Surgery Center of North Central Ohio—a new \$5 million facility sitting on 2.5 acres adjacent to Fisher-Titus Convenient Care in Norwalk, which is designed to serve area residents with affordable outpatient services and procedures. It will offer over 12,500 square feet of medical space, including pre- and post-surgical

areas, three operating rooms, and a procedure room. Services to be offered include orthopedics, podiatry, ophthalmology, ENT, and gastroenterology, among others. **Perspectus**, based in Cleveland, is the architect for this project and **Karpinski Engineering** is the project engineer.

Groundbreaking took place last fall, and completion is scheduled for this summer.

U.S. COEXCELL

Rudolph Libbe Inc. served as design/build contractor on U.S. COEXCELL, Inc.'s new Maumee facility, which serves as the company's headquarters, manufacturing space, and warehouse. **Poggemeyer Design Group** served as architect for the 82,500 square foot, \$9 million-plus project.

The new building more than doubles the company's previous manufacturing space. The project includes Varco-Pruden insulated metal panels, a 10-ton bridge crane, and an isolated air conditioned and dust-free manufacturing space.

Rudolph Libbe's own tradespeople self-performed site work, concrete, masonry, and carpentry. **GEM Inc.**, also of the Rudolph Libbe Group, is performing steel erection for the Varco-Pruden pre-engineered metal building, as well as installing plumbing, HVAC, and electrical systems.

Lucas County Board of Developmental Disabilities

Poggemeyer Design Group, Inc. is providing services on the renovation and addition of a new 7,835 square foot section to the Lucas County Board of Developmental Disabilities' existing Toledo facility.

Serving Our Seniors

Poulos + Schmid Design Group, Inc. is providing services on the renovation of current and additional office space for Serving Our Seniors in Sandusky, a non-profit organization that provides a range of services for older adults living in Erie County.

For info on submitting your company's major projects to Under Construction, email ahintz@toledobiz.com.

Deadline is the 10th of the month preceding publication. All projects received by deadline will be considered.



LOUISVILLE TITLE

Concerned About Your Real Estate Deal Closing?

Louisville Title Stands Ready!

E-recordings • Gap Insurance • In House Title Plant



John Martin
419.248.4611



Jim Lindsay
419.320.1619



Tracy Sallah
419.260.6031



Karla Juergens
419.246.6728



Aubrey Hornsby
850.384.7276



Jennifer Burnor
419.246.6733



Chris Bosinger
419.514.3273

Locally Owned & Operated For Over 70 Years
A tradition of sound advice, a reputation for results.

CommercialOrders@LouisvilleTitle.Com

www.LouisvilleTitle.Com



At F&M it's always about you and us.
Partner with us for all your business banking needs.



ROB GRAHAM
Commercial Banker
419.931.8892



JOHN KANTNER
Commercial Banker
419.824.0066



FARMERS & MERCHANTS
STATE BANK



YOU KNOW WHAT
IT TAKES TO RUN
A BUSINESS.

**And we're here to help make
it happen.**

Whether you're a company of one or a large scale operation, running a business is no small task. It takes passion, drive and dedication. As your business evolves, we're here to offer experienced guidance and dedicated support to help you.

53.com/CommercialBank



FIFTH THIRD BANK

Fifth Third Means Business

INDUSTRIAL REAL ESTATE REPORT



Ned Coyle, CCIM



Keenan Fields



Ron Jurgenson, CCIM, SIOR



Dave Kerscher, CCIM



Rob Keleghan, SIOR



Stephanie Kuhlman



Robert P. Mack, CCIM, SIOR



Megan Malczewski, CCIM



Ken Marciniak



Lynette Reichle, SIOR

Firm / Listing Agent: **Miller Diversified Realty** / Dave Kerscher, CCIM
 Represented: Voegeli Trust (Seller)
 Firm / Buyer's Agent: i.n.a.
 Represented: Timco LLC (Buyer)
 Location / Property Size: 3219 South Ave, Toledo / 6,500 sf
 Transaction Type: Sale

Firm / Listing Agent: Outside Broker
 Represented: Interstate Glass (Seller)
 Firm / Buyer's Agent: **NAI Harmon Group** / Stephanie Kuhlman
 Represented: Tower Maintenance Group (Buyer)
 Location / Property Size: 2845 Crane Way, Northwood / 11,520 sf
 Transaction Type: Sale

Firm / Listing and Buyer's Agent: **NAI Harmon Group** / Stephanie Kuhlman
 Represented: Tower Maintenance Group (Seller) and Service Leaders (Buyer)
 Location / Property Size: 9665 Compass Dr, Rossford / 6,000 sf
 Transaction Type: Sale

Firm / Listing Agent: **Reichle Klein Group** / Ron Jurgenson, CCIM, SIOR
 Represented: I.B.C., Inc. (Lessor)
 Firm / Leasing Agent: i.n.a.

Represented: i.n.a.
 Location / Property Size: 3934 Concord St, Toledo / 20,610 sf
 Transaction Type: Lease

Firm / Listing Agent: **Reichle Klein Group** / Ron Jurgenson, CCIM, SIOR
 Represented: Foster Enterprises, LLC (Lessor)
 Firm / Leasing Agent: i.n.a.
 Represented: i.n.a.
 Location / Property Size: 4035 N King Rd, Sylvania / 4,000 sf
 Transaction Type: Lease

Firm / Listing Agent: **Reichle Klein Group** / Ned Coyle, CCIM
 Represented: Jane Kinn Davis (Seller)
 Firm / Buyer's Agent: i.n.a.
 Represented: i.n.a.
 Location / Property Size: 0 Progress Pkwy, Tiffin / 2 acres
 Transaction Type: Sale

Firm / Listing Agent: i.n.a.
 Represented: i.n.a.
 Firm / Buyer's Agent: **Reichle Klein Group** / Lynette Reichle, SIOR
 Represented: J-West, LLC (Buyer)

Location / Property Size: 3525 Silica Rd, Sylvania / 29,770 sf
 Transaction Type: Sale

Firm / Listing Agent: **Reichle Klein Group** / Ron Jurgenson, CCIM, SIOR
 Represented: I.B.C., Inc. (Lessor)
 Firm / Leasing Agent: i.n.a.
 Represented: i.n.a.
 Location / Property Size: 5655 Opportunity Dr, Toledo / 1,600 sf
 Transaction Type: Lease

Firm / Listing Agents: **Signature Associates** / Robert P. Mack, CCIM, SIOR; Megan Malczewski, CCIM
 Represented: WPV, LLC (Lessor)
 Firm / Leasing Agent: Outside Broker

Represented: Miller Diversified, Inc. (Lessee)
 Location / Property Size: 218 Mechanic, Waterville / 6,000 sf
 Transaction Type: Lease

Firm / Listing Agent: **Signature Associates** / Rob Keleghan, SIOR
 Represented: Erin Development (Lessor)
 Firm / Leasing Agent: None
 Represented: Black Swamp Technologies, LLC (Lessee)
 Location / Property Size: 5222-5272 Tractor, Toledo / 3,000 sf
 Transaction Type: Lease


Firm / Listing Agents: **Signature Associates** / Keenan Fields; Rob Keleghan, SIOR

Continued on page 18

CLASSIFIEDS

PHONE: 419.865.0972 • FAX: 419.865.2429 • DEADLINE: 15TH OF MONTH

2020 Mercedes-Benz Vehicles
 Four 4MATIC® Models Starting Under \$40K*
 A220, CLA250, GLA250, & GLB250



COPPUS
 SINCE 1927

Call Rod Cramer or Chris Hammond
 419-447-8131
 2190 W Market St, Tiffin, OH
 www.CoppusMercedes.com

OFFICE FOR SALE OR LEASE

I HAVE TWO SUITES AVAILABLE AT 3900 SUNFOREST COURT. THESE ARE PRIME SPACES ON THE FIRST FLOOR OFF THE LOBBY

- 3900 SQ. FT. FORMERLY OCCUPIED BY AN ORTHOPEDIC SURGEON COMPLETE WITH THE X-RAY EQUIPMENT, 4 OFFICES, SEVERAL EXAM ROOMS ALONG WITH OPEN OFFICE SPACE**
- 1100 SQ. FT. ADJACENT TO ABOVE FORMERLY OCCUPIED BY A PHYSICAL THERAPY OFFICE**

WILL LEASE THE LARGER SPACE FOR \$6.00/SQ. FT. AND THE SMALLER SPACE FOR \$8.00/SQ. FT. OR SELL THEM FOR \$0.00/SQ. FT. AND PROVIDE FINANCING. TENANT PAYS THE HOA FEES WHICH INCLUDE ALL UTILITIES.

CALL SKIP 419-345-3444

INDUSTRIAL/COMMERCIAL FOR SALE/LEASE

DEVELOPMENT POSSIBILITIES! 26 ACRES, CLASS 201 COMMERCIAL, LOCATED NORTH OF TECUMSEH MI CITY LIMITS. OVER 1000' OF FRONTAGE ON HIGH TRAFFIC ROAD. 3,640 SQFT BLDG. \$399,900.


CALL DIANA AT FAUST REAL ESTATE, LLC 517-270-3646

LAND FOR SALE

LAND FOR SALE, MAUMEE - \$625,000 ACROSS FROM ST. LUKE'S HOSPITAL 3.92 ACRES, 673' FRONTAGE, C-4 CONTACT COLLEEN LACHAPPELLE, 419-350-3024 HARMONY REALTY GROUP

CALL 419-865-0972 TO PLACE YOUR CLASSIFIED HERE!
 \$20 for 20 words, \$0.40 each additional word. \$5 additional to box the ad. \$5 each bolded line. \$20 to add a logo or picture.

Mercedes-Benz Commercial Vans
 Diesel or Gas, Whatever Works for You.



COPPUS
 SINCE 1927

Call Chris Hammond or Rod Cramer
 419-447-8131
 2190 W Market St, Tiffin, OH
 CoppusMercedes.com

ADVERTISING

CALL 419-865-0972 TO PLACE YOUR CLASSIFIED HERE!
 \$20 for 20 words, \$0.40 each additional word.
 \$5 additional to box the ad. \$5 each bolded line.
 \$20 to add a logo or picture.

FAIR HOUSING POLICY
 All residential Real Estate advertising in this paper is subject to the Federal Fair Housing Act, which makes it illegal to advertise any preference, limitation or discrimination based on race, sex, religion, handicap, national origin or familial status. This paper will not knowingly accept any advertising for residential real estate which is in violation of the law. All readers are hereby informed that all residential properties advertised in this publication are available on an equal opportunity basis.

TOLEDO BUSINESS JOURNAL
LAKE ERIE WEST MANUFACTURING & CONSTRUCTION NEWS
DEVELOPMENT NEWS

BUSINESS CARD NETWORK

Give us a call at 419-865-0972 to find out how you can efficiently reach thousands of readers each month with the **BUSINESS CARD NETWORK!**

"A Name You Can Trust"

HOLT ROOFING CO.

Family Owned and Operated Since 1947

REPAIR SPECIALIST · GUTTERS · COMMERCIAL & RESIDENTIAL
 LICENSED IN OHIO & MICHIGAN
www.holtroofing.com

419-478-2900

Firestone BUILDING PRODUCTS
 Licensed Roof Shield Contractor

Torch Awards for Ethics

DiSalle Commercial

For Your Commercial / Investment Needs...
419-893-4415 1909 River Rd., Maumee, Ohio 43537

OFFICE SPACE FOR SALE OR LEASE



FOR SALE: 28 N. Fearing St.
 2600 sq ft of office space, 2.75 acres of land, high traffic count @ intersection of Hill Ave. Asking \$139,900
DanDiSalle, Jr. 419-261-4010



1613 H – BT – SPRINGFIELD TWP.
 3,000 sq.ft. available. Great Access to Interstate. Many Opportunities.
Contact: Bill Thees, 419-893-4415.

RETAIL SPACE FOR SALE OR LEASE

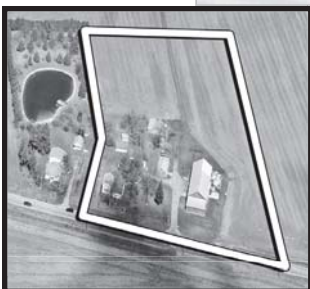


RETAIL SPACE FOR LEASE:
840 W. Boundary, Suite 3
 2100 Sq. ft. Prime Perrysburg close to New car dealership, HIGH traffic count & visibility on Rt. 25, join Papa Johns & Brodie Optometry, median HHI= \$87,947!, median property value \$208,900, NNN
Contact Dan DiSalle 419-261-4010 or dandisalle@disallerealestate.com



FOR SALE OR LEASE: 3565 Libbey Road - Perrysburg, OH
 At I-280 & the Ohio Truck stop area 2906 square feet former Wendy's w/ 2 drive through windows, some equipment remains.
Contact Dan DiSalle 419-261-4010 or dandisalle@disallerealestate.com.

DEVELOPMENT PROPERTIES



WATERVILLE / WHITEHOUSE AREA. Many Possibilities for Development! Over 400' of Frontage; 5+ Acres. \$490,000. Located between Waterville & Whitehouse on St. Rt. 64. Just across the new St Rt 24 Overpass from Kroger. Per DOT, traffic count per day 10,000+.
Contact JUD Mathewson. Call 419-261-8894 jmathewson@disallerealestate.com

APRIL SPOTLIGHT



SWAN CREEK NEAR ARROWHEAD.
21,000 SF. FOR SALE OR LEASE



9,040 SF – SYLVANIA TWP
OWNER WILL EXPAND OR DIVIDE. FOR SALE OR LEASE

Contact: Bill Thees
DiSalle Real Estate Co.
Commercial & Investment Division
419-893-4415

ACREAGE FOR SALE

ANTHONY WAYNE TRAIL CORNER LOT, MAUMEE, OH AT MICHIGAN AVE. 225x127. Asking \$99,500. **Contact: Dan DiSalle 419-261-4010 or dandisalle@disallerealestate.com.**

AIRPORT HIGHWAY (ST RT 2) AT BROOKVIEW. 226x206. Asking \$84,900. **Contact: Dan DiSalle 419-261-4010 or dandisalle@disallerealestate.com.**

3468 DORR ST RIGHT @ BYRNE RD. – Roughly 80x250 HIGH visibility & traffic counts just off U of Toledo campus! **Now \$220,000!**
Contact: Dan DiSalle 419-261-4010 or dandisalle@disallerealestate.com.

1/2 ACRE LOT – PERRYSBURG TOWNSHIP.
 180 ft of frontage on Oregon Road just north of St Rt 795, only \$49,900.
Contact: Dan DiSalle, Jr., 419-874-2231 or Joe DiSalle, 419-460-5253.

SYLVANIA TWP – ZONE RD.
 2 Commercial lots. **Contact: Bill Thees, 419-893-4415.**

4 lots DPC – BT – DEER PARK COURT.
 4 Office lots available. Next to Arrowhead, along Swan Creek. Can be combined, split.
Contact: Bill Thees, 419-893-4415.

Visit www.DiSalleRealEstate.com for more information on these properties!

Uckele

...Continued from page 1

the necessary investments to do so. We are expecting to be manufacturing products in at least one section of the facility by mid-summer,” said Kevin Isley, vice president of sales and marketing, Uckele. “We have the expectation that the facility in Adrian will indeed result in new jobs to the area. Our plans for the Adrian facility include a relocation of the facility we currently operate in Toledo, where we employ about 40 employees. Our hope is that many of the employees will be able to transition to either our Adrian facility, or our main location in Blissfield. This Adrian facility is much larger than the Toledo plant and will have increased operations and manufacturing lines.”

While some administrative offices will be moved to Adrian, Blissfield will remain Uckele headquarters. Uckele plans to renovate the facility to bring it into compliance with GMP (good manufacturing practice) for dietary supplements.

Uckele attributes the need for expansion to the growth of contract manufacturing partnerships using Uckele’s formulation, regulatory, and manufacturing expertise. Uckele partners with well-known brands that are marketed domestically and internationally.

Mike Uckele, CEO and owner, also attributes the need for expansion to exponential growth and anticipated future growth due to tremendous demand for their nutritional products, most specifically pet products.

He added, “A surging demand for soft chews from the perspective of canine supple-



Aerial view of Uckele Health & Nutrition's headquarters in Blissfield, Michigan

mentation is also a driving factor.”

Isley noted that Uckele is making a large investment in new production automation equipment, as well as other equipment to outfit the facility.

“We are going to be producing dietary supplements for sale into the human natural product space as well as the pet market. Additionally, we are planning to move our pick and pack shipping to that location, along with some office personnel and warehousing. All of the operations will necessitate new equip-

future,” said Isley.

Uckele is a nutritional products manufacturer with formulation expertise in dietary supplements and natural topical products. According to the company, it is also a well-known contract manufacturer in the human, pet, and equine industries. In addition, Uckele manufactures products that are marketed under its company-owned brands on their website.

Uckele’s expansion to Adrian was supported by the Michigan Economic Development Corporation (MEDC), Lenawee Now – the County’s economic development organization – Michigan Works, and the City of Adrian. Uckele expects to start the Adrian operation with over 50 staff and anticipates significant growth over the next year as they settle into the new facilities.

Adrian’s Mayor, Angela Sword Heath, said, “We are very excited to have Uckele coming to Adrian. We feel very fortunate and honored that when they wanted to expand their business, that they chose the City of Adrian.”

According to Uckele Health & Nutrition, it is an innovation-driven health company committed to being on the leading edge of nutritional science and technology for nearly 60 years, formulating and manufacturing a full spectrum of quality nutritional supplements incorporating the latest nutritional advances.

TOLEDO
BUSINESS
JOURNAL

DEVELOPMENT
NEWS

LAKE ERIE WEST
MANUFACTURING
& CONSTRUCTION
NEWS

Call 419-865-0972
for advertising info

AVAILABLE FOR SALE OR LEASE

Office - Industrial Warehouse For Sale or Lease

1670 Indian Wood Circle
Maumee, OH 43537

BROKER PROTECTED

- **RECENTLY EXPANDED WAREHOUSE!!**
- Up to 22,500 SF of Fully Conditioned Warehouse with 25' Clear.
- Two dock doors with levelers and Grade level door - 12' x 14'
- 1,600 amp, 3P, 4-wire power
- 30 private offices
- Two-story, open-atrium lobby
- Wooded setting
- 185-vehicle parking area
- Offers excellent access to I-475/US-23 at Dussel Drive and Ohio Turnpike (I-80/90) at Reynolds Road



Sale Price: \$2,600,000
Lease Rate: \$7.50/SF NNN
Building Size: 50,250 SF
Acreage: 3.22 Acres
Zoning: C1 - M1



CONTACT US

Mr. Scott Mirtes
President
419.572.0610
scott.mirtes@gmail.com

 **MIRTES, LTD**